

STUDENT ENGAGEMENT AND ACTIVE LEARNING LAB

at the Mike Ilitch School of Business
Career-connected learning

Wayne State University's Mike Ilitch School of Business is committed to putting degree attainment and financial security within reach for everyone. This means being the business school that puts jobs and household-supporting wages on the top of our list. We seek to elevate our students' talent and provide the resources needed to persist from our classrooms to careers. Through the creation of the Student Engagement and Active Learning Lab (SEAL Lab), the Ilitch School will enhance our students' skills and create new entry points for bright future careers.

The Ilitch School offers many student resources, but we seek to centralize them to create a robust system of support. The SEAL Lab will be a dedicated resource hub that provides opportunities for students to level up their skills and compete with graduates from any top business school. By focusing on skill development, international engagement, career readiness and increased student support, the Ilitch School is shaping the future of business in Detroit. The majority of our graduates stay in Michigan, contributing to the local workforce and growing the state's economy.



The SEAL Lab's five pillars for student success

The SEAL Lab will encompass five pillars that elevate the work of our students, providing them with an excellent education and incredible return on investment.



1

STUDENT SUCCESS

The Ilitch School takes a holistic approach to student success that reaches beyond classroom learning to support all aspects of a student's journey. With thousands of first-generation students and returning adult learners, our students need unique support while pursuing their education to ensure they can be competitive with graduates from top institutions. Through a robust suite of student success resources, including early detection academic support services, access to mental health support, and financial literacy education, we invest in our students' continued success both in and out of the classroom.

2

EXPERIENTIAL LEARNING

Our expanded experiential learning programs will get students ready to take on the corporate world or their own entrepreneurial endeavors. We will create clinics that mirror consulting relationships as expert faculty members team with talented students to solve challenges brought to us from industry partners. The initial clinics will focus on entrepreneurship and innovation, corporate social responsibility, experiential learning coordination, and sports and entertainment management. The clinic program is a reciprocal, self-sustaining model that benefits local companies while building our students' confidence, skills and professional networks.

3

INTERNATIONAL ENGAGEMENT

International experiences enrich learning by broadening students' understanding of international business practices, cultural diversity, and the vastness of the global marketplace. To ensure our graduates are competitive in a global economy, we seek to provide every student with the opportunity to broaden their cultural horizons. We can accomplish this goal through study abroad programs, language immersion curriculum, educational exchange opportunities and case competitions. By providing funding for faculty to enrich existing programs and develop new, robust experiences, as well as making international experiences more financially accessible for students, we can raise the caliber of international education across the school.

4

CAREER READINESS

Career readiness support is a critical need identified by our Ilitch School alumni, both recent graduates and experienced hiring managers. Our students need accessible certifications in programs from Microsoft, Google, Salesforce.com and more. By creating a space for students to learn these skills and acquire the certificates for free, the Ilitch School will ease the transition to careers for our students. Additional software-based guidance includes career exploration, resume writing support, job search strategies, interviewing, internships, co-op programs and networking opportunities. Our lab will also offer aptitude testing and support testing reviews for the CPA and CFP exams.

5

STRATEGIC THINKING AND LEADERSHIP DEVELOPMENT

In today's competitive marketplace, businesses aim to hire graduates who know how to identify and solve problems creatively and efficiently. Strategic thinking is an iterative process that requires practice. In our unique space, we will use tools such as workshops and gaming to teach logic, problem identification and creative solution generation that culminate in a critical thinking case competition. We envision a space within the lab that promotes cross-pollination of ideas among students and disciplines. We will encourage collaborative work by providing funds to students to attend conferences and leadership development seminars.

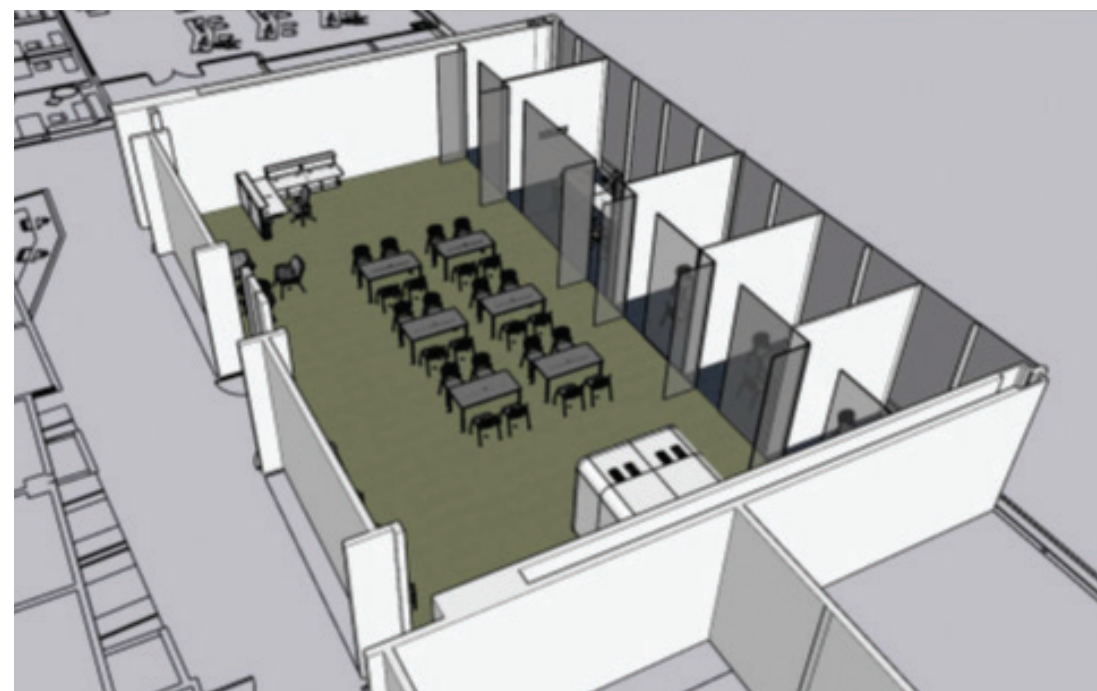
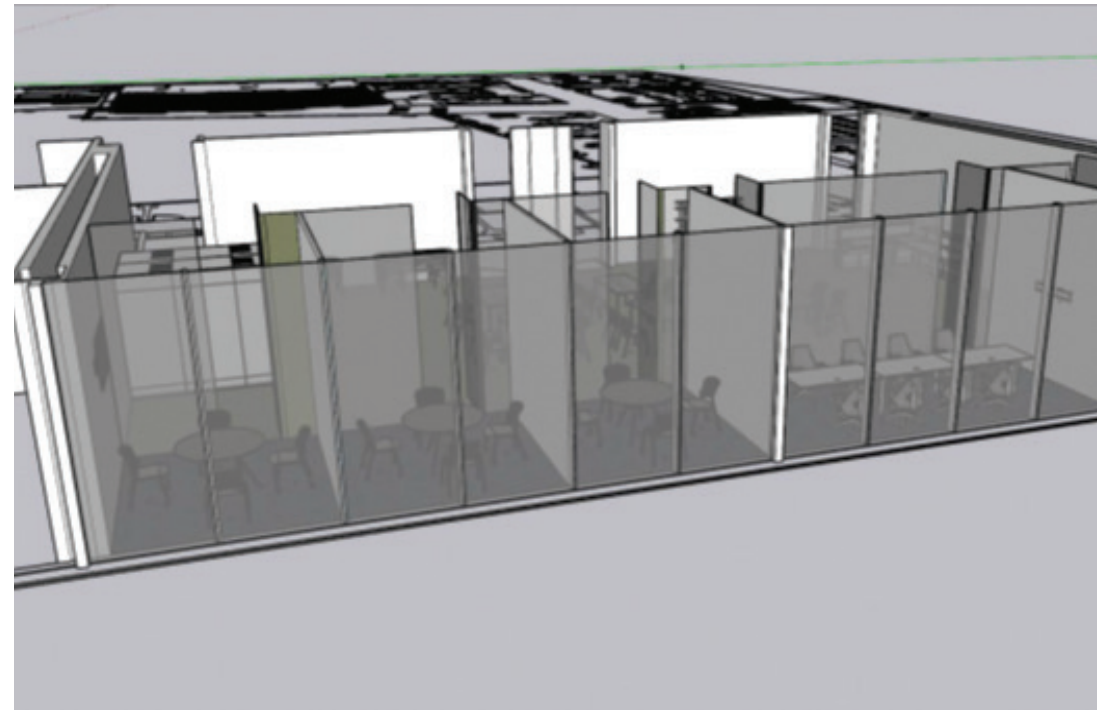
The core

Supporting the five pillars is a dedicated, full-time SEAL Lab concierge to assist students and facilitate engaging experiences. The concierge will offer support by scheduling tutoring, evaluating the lab's offerings, and referring students to resources throughout the university such as counseling or financial aid.

To better provide accessible, comprehensive, and visible services to students, we will reimagine a space within the Ilitch School. Our Woodward Avenue-facing classrooms are an ideal location for the SEAL Lab. They feature inviting front-row seats to the city where students can come to pursue their academic, personal and professional goals. Two existing rooms will be refreshed with the removal of a wall and the addition of modular furniture, writeable surfaces and the installation of a movable glass wall for easy adaptation of space.



Timeline



Over the next five years, we will take a phased approach to development and implementation of the SEAL Lab.

In year one, we will migrate existing support programs to the classroom spaces and begin programming, tutoring, international support and experiential learning. We will then develop a four-year plan to fully realize the SEAL Lab and set short-, medium- and long-term goals.

In year two, we will begin to pilot our career-connected experiential learning clinics with the goal of simultaneously developing a revenue-generating corporate partners program for the clinics that will fund the clinics. We will also work to secure funds to purchase computers, software and licenses for student certifications, leadership development and career planning.

By year three, we envision initial construction on the physical improvements to the lab. This gives us time to make sure the new and refreshed programs and plans are working to meet the needs of our students.

In year four, we will offer the full suite of programs to students.

By year five, we seek to be fully staffed and operational. We will evaluate the SEAL Lab and offerings on an ongoing basis.

You can help
shape the future
of business in
Detroit by
supporting the
SEAL Lab.

For more information about
the Mike Ilitch School of
Business, our programs and
the impact your investment
can make, please contact your
philanthropy officer.





WAYNE STATE UNIVERSITY
MIKE ILITCH
SCHOOL OF BUSINESS